



Precise Industries Inc.



PH. (714) 482-2333

sales@preciseind.com



Corporate Overview

- Experts in the production of complex sheet metal, enclosures, precision machined components, assemblies and systems – vertically integrated capabilities.
- Formed July 2004; Privately Held.
- Production equipment is state of the art, precision sheet metal, machining and value-add systems and processes
- Facility and systems continuously updated to meet evolving, strict OSHA, CARB regulations (operator safety, air and water cleanliness, etc.) – fully conformant
- Primary Markets Served: Defense, Aerospace, Medical, Semiconductor Equipment, Commercial.



Facility and Staffing

- ~100k ft² Headquarters & Factory, Brea, California
 - 55k ft² Sheet Metal,
 - 25k ft² Machining,
 - 20k ft² Value Added Services/Administration
- ~125 Regular Full Time Employees
 - Temporary/Flexible Manufacturing Staff Not Included
 - Lean, Highly Experienced Management Team



Quality Systems Registration

- AS 9100 REV D/ ISO 9001 – 2015 Certified
- ITAR, UL, AECA Registered/Listed

CERTIFICATE OF REGISTRATION 

PRECISE INDUSTRIES, INC.
610 Neptune Avenue
Brea, California 92821 USA

American Global Standards, Inc. (AGS) issues this certificate to the firm named above, having assessed and approved the firm's Quality Management system and finding the system conforms to the standards of:

ISO 9001:2015

The Quality Management System is applicable to the following:

**Manufacture and Fabrication of
Machine and Sheet Metal Products**

This approval is subject to the firm maintaining its system to the required standards, which will be monitored by AGS. In the issuance of this certificate, AGS assumes no liability to any party other than the firm named above, and then only in accordance with the agreed upon Quality System Assessment Agreement.

Certification Number: AGS-US030182/3
Original Approval: January 27, 2017
Date of Issue: January 30, 2024
Date of Expiration: January 29, 2027


For and On Behalf of American Global Standards, LLC
Stephen Kenesly, President



Massachusetts Office: 445 Main Street Rt. 6A, Suite #107 East Sandwich, MA 02537
California Office: 1127 Coast Village Road, Suite #495 Monroeville, CA 93008
617-930-6648 • info@americanglobal.org

CERTIFICATE OF REGISTRATION 

PRECISE INDUSTRIES, INC.
610 Neptune Avenue
Brea, California 92821 USA

American Global Standards, LLC (AGS) issues this certificate to the firm named above, having assessed and approved the firm's Quality Management System-Requirements for Aviation, Space & Defense Organizations and finding the system conforms to the standards of:

AS9100 Rev. D

The Quality Management Systems-Requirements for Aviation, Space & Defense Organizations is applicable to the following:

**Manufacture and Fabrication of
Machine and Sheet Metal Products**

This approval is subject to the firm maintaining its system to the required standards, which will be monitored by AGS. In the issuance of this certificate, AGS assumes no liability to any party other than the firm named above, and then only in accordance with the agreed upon Quality System Assessment Agreement.

Certification Number: AGS-US030182/3/1
Original Approval: January 27, 2017
Date of Issue: January 30, 2024
Date of Expiration: January 29, 2027


For and On Behalf of American Global Standards, LLC
Stephen Kenesly, President

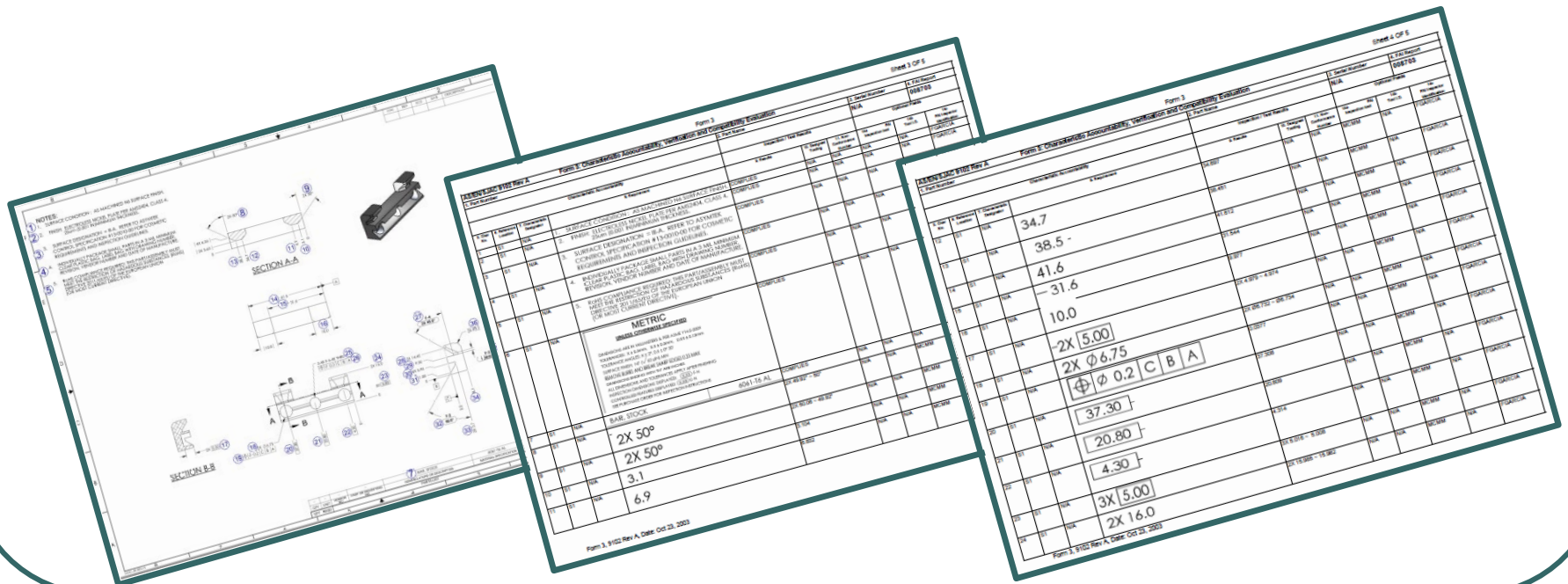


Massachusetts Office: 445 Main Street Rt. 6A, Suite #107 East Sandwich, MA 02537
California Office: 1127 Coast Village Road, Suite #495 Monroeville, CA 93008
617-930-6648 • info@americanglobal.org



Mature Quality Processes

- AS9102 Inspection Format
- Available Electronic Transfer of FAIR's





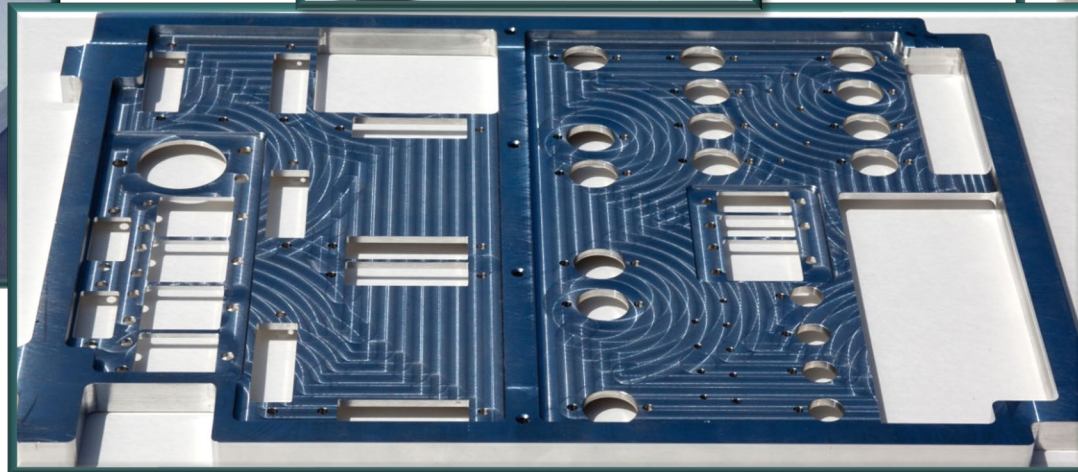
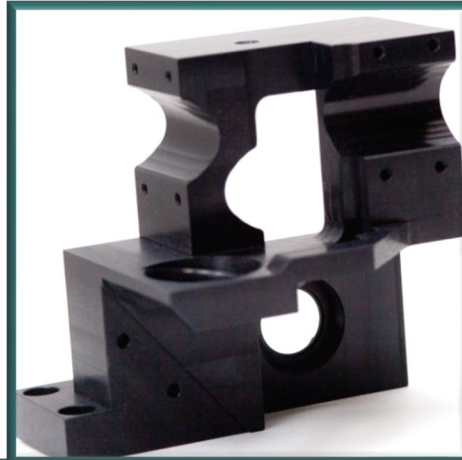
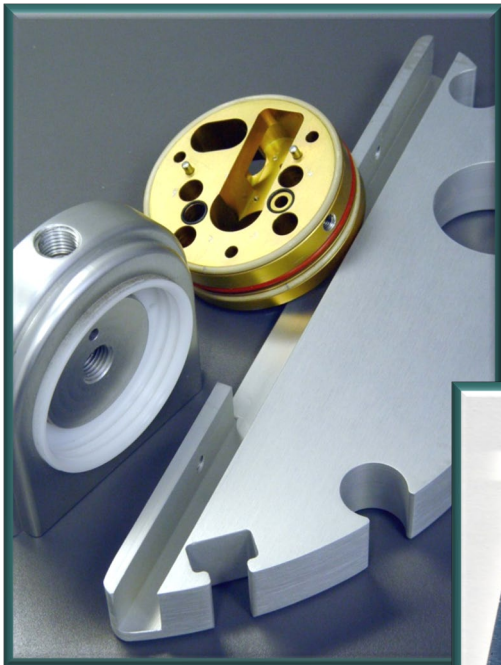
Quality Inspection/Metrology

- Two Brown & Sharpe CMM's (60" max)
- Scherr Tumico Optical Comparator
- 8' x 8' granite surface plate with full array of precision metrology equipment
- Amada Fabri-Vision by Virtek





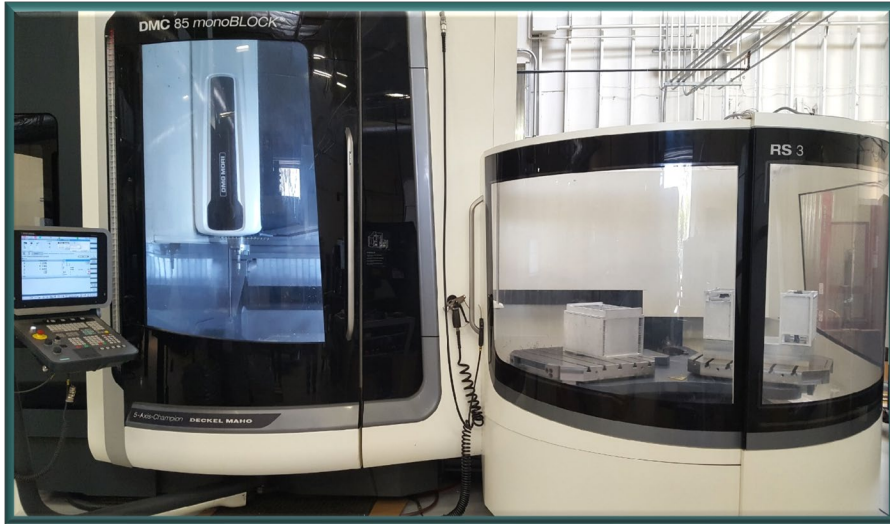
Precision Machining





5 Axis Production Milling

- DMG-Mori DMC 85 monoBLOCK w/pallet (37"x33"x27" capacity)
- Mori-Seiki NMV 5000 5 Axis Vertical Milling Center





Production Milling Centers

- (7) Mori-Seiki Horizontal Mills (28"x28"x33" max capacity)
- (4) Mori-Seiki Vertical Mills (41"x21"x20" max capacity)
- Haas VF9-50 3 Axis Milling Center (84"x40"x30" max capacity)





Mazak Integrex i-300S Turn/Milling Center w/Loader

- Combination Lathe and Multi-Axis Milling Center
- Enables highly complex parts completion with single setups
- Max Travel = 24"(x), 10"(y), 62"(z), 62"(w)





Production CNC Turning Centers

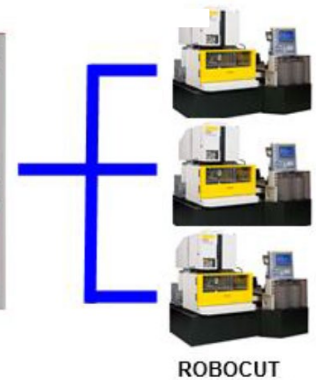
- (2) Mazak Multi Spindle Lathes (11" max dia, 17" length)
- (5) Haas SL-20 CNC Turning Centers (10" max dia, 20" length)





Production Wire EDM

- Three Fanuc Wire EDM
 - Fanuc Alpha Series Wire EDM Machine *C600iB -16*
 - Travel: X Axis: 23.6", Y Axis: 15.7", Z Axis: 16.1"

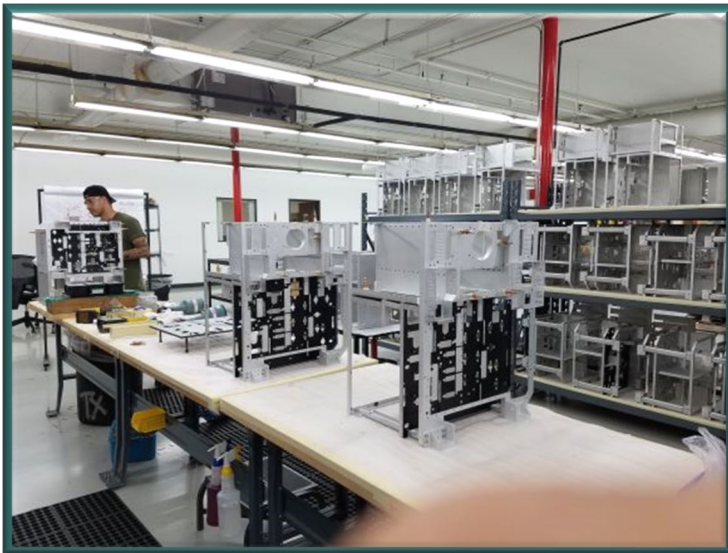


ROBOCUT



Assembly and Integration

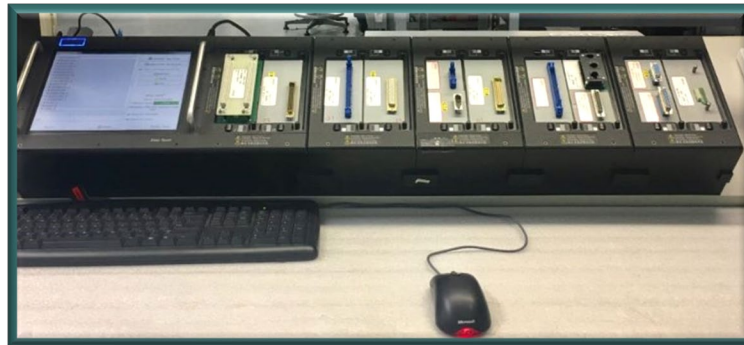
- Full service production assembly, integration and testing capabilities – in house
- Kan-Ban based supply strategy – dock to stock/replenish





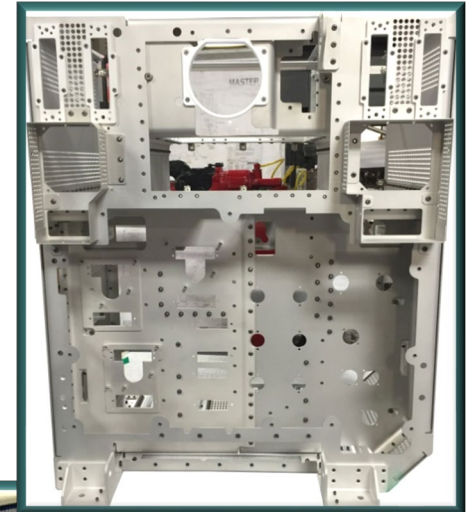
Electrical Integration, Wiring and Cable Production/Test

- Complete Electrical Cable and Harness Production, Testing and Integration (UL Listed)
- Cirrus Point-Point, Resistance and Hy-Pot Testing Equipment
- Full array of crimping, soldering, marking equipment





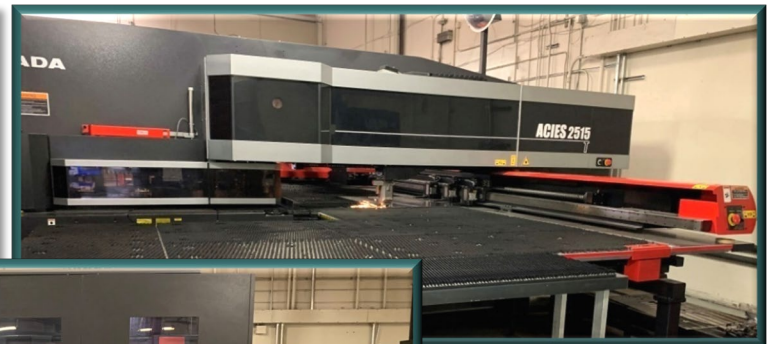
Precision Sheet Metal Fabrication





Amada ACIES 2515 Laser/Punch Combination

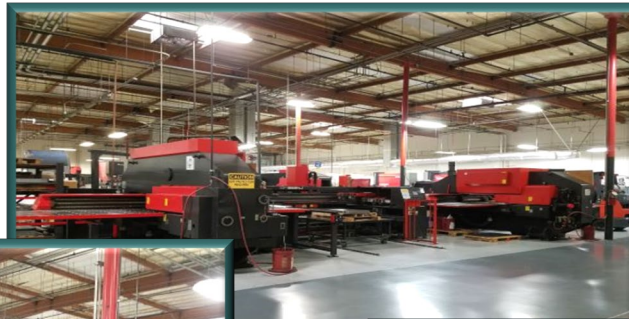
- Combines the speed and precision of Turret Punch with infinite flexibility of laser cutting
- 120" by 60" working space, auto load/unload
- Completely automated tool loading/maintenance





Sheet Metal Cutting and Punching

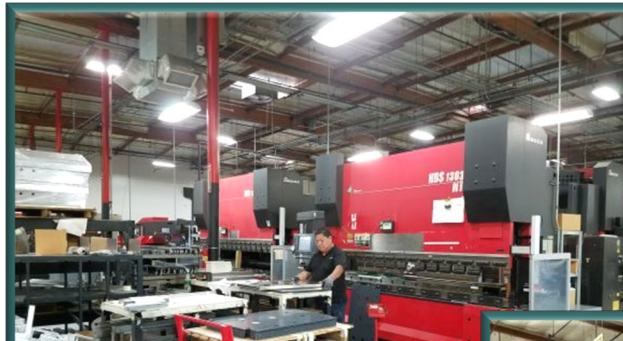
- (3) Mazak Lasers w/Auto-Load
- (4) Amada CNC Turret Punch Presses w/Auto-Load
- Full Compliment Support Equipment





Sheet Metal Forming

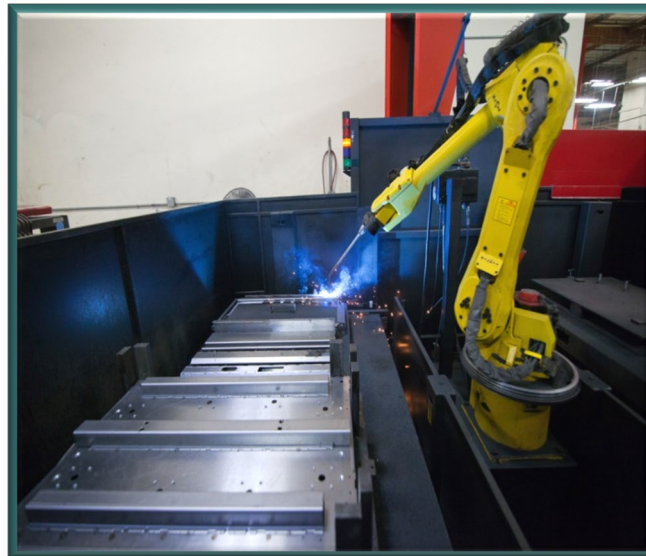
- Amada CNC Press Brake w/Auto Tool Changer
- (7) Additional Amada CNC Press Brakes, 10' Working Capacity





Sheet Metal Fastening

- Lincoln System 35 Robotic MIG Welder
- (6) Manual TIG/MIG Welding Stations (incl. Alu, Stainless, etc.)
- Full Spot Weld, Adhesive, Dip Braze* Expertise
- Complete Pinning, Riveting, Mechanical Fastening Capabilities

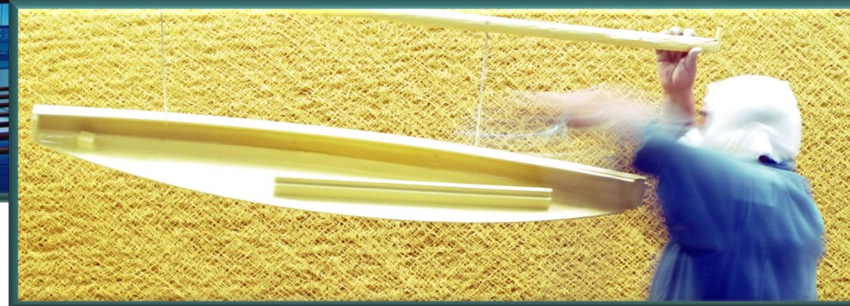
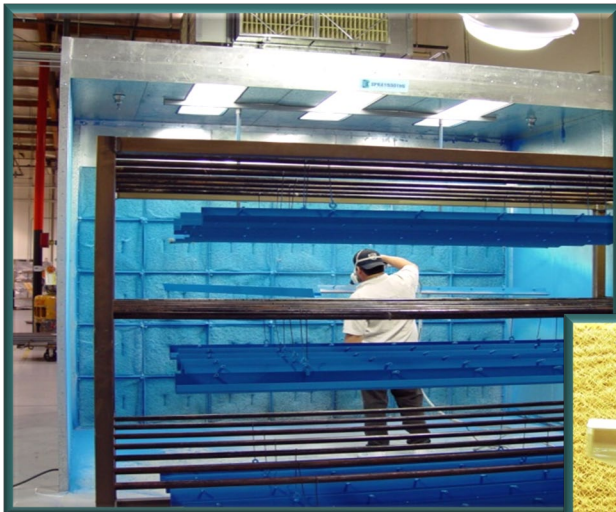


** External Process*



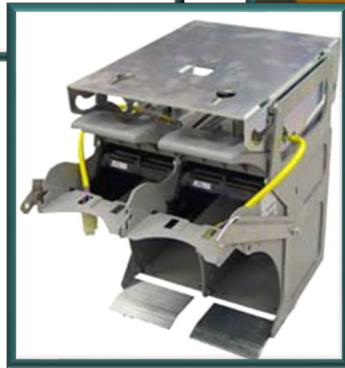
Metal Finishing

- In-house Paint, Powder Coat, EMI/RFI Shielding, Silk Screen (w/in-house screen construction), Laser Marking
- Bead/Sand Blasting, Grinding, Surface Finishing, Tumbling





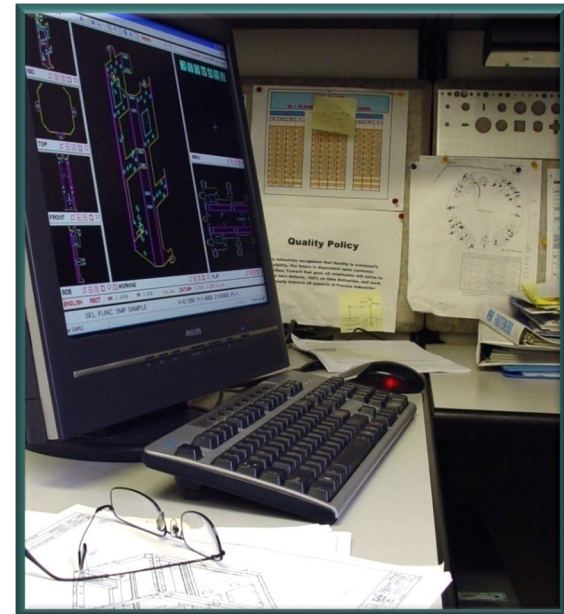
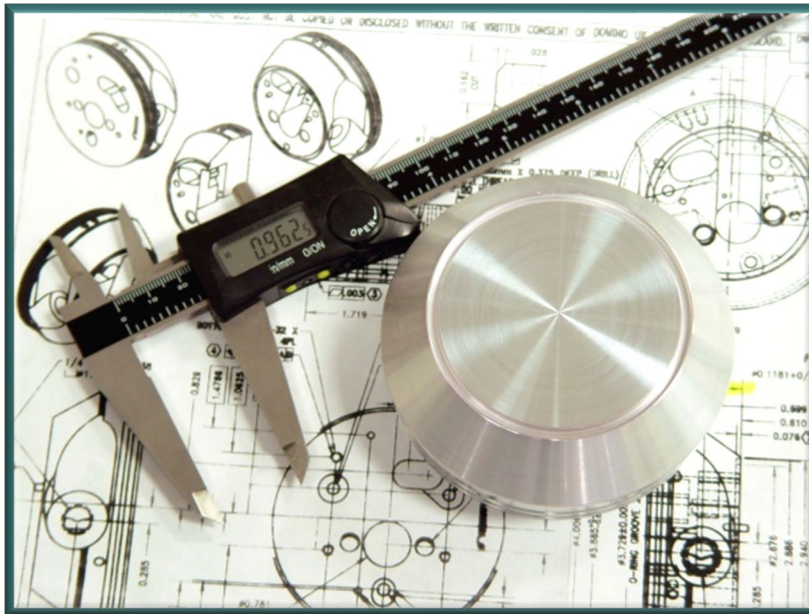
System Integration and Enclosure Manufacturing





Additional Services

- Mechanical/Manufacturing Engineering
- Design for Manufacture / Lower Cost
- Concurrent Engineering
- Project / Program Management
- Free Local (all So Cal areas) Parts Delivery





Thank You!



Call or Email for Info, Quotes and Project Consultation:
PH. (714) 482-2333 Sales@preciseind.com